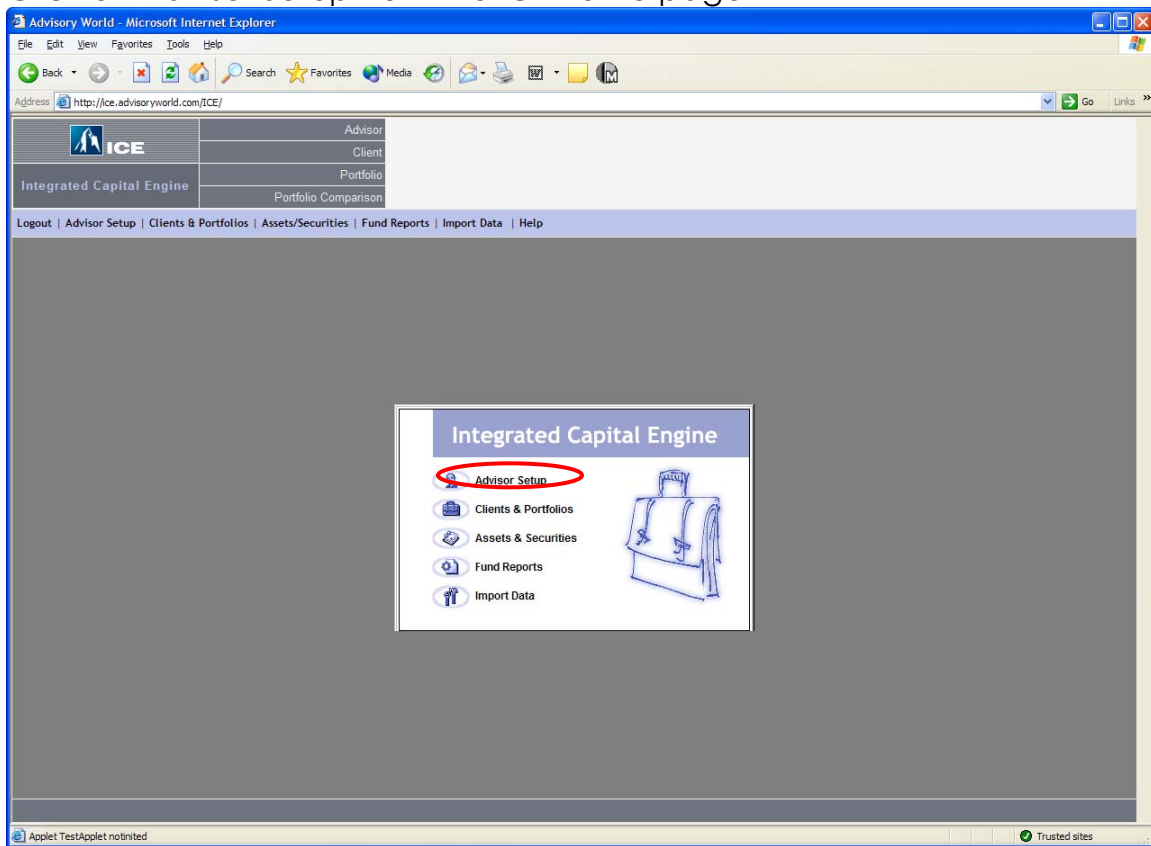


## How to add your logo to ICE reports

Click on Advisor Setup from the ICE home page



Click on Reports & Plugins  
→ Click on Report Settings

Advisor Setup - Microsoft Internet Explorer

Personal Info   Contacts   Standard Advisor Fees   **Reports & Plugins**   Permissions   Change Password

**Reports Available**

- Investment Policy Statement
- Portfolio Review
- Summary Report
- Questionnaire
- Portfolio Cash Flow
- Hypothetical Performance
- Disclosure Statement
- Portfolio Overview
- Portfolio Comparison
- Completed Questionnaire
- Monte Carlo Simulation
- Overview

**Tables Available**

- Portfolio Recommendation
- Portfolio Values
- Asset Class Statistics
- Portfolio Implementation
- Portfolio Correlations
- Monthly RORs
- Rolling Period RORs
- Portfolio Rates of Returns
- Asset Class Information
- Comparison Implementation
- Portfolio Asset Returns
- Portfolio Status
- Growth of a Dollar
- Efficient Frontier Portfolios

**Graphs Available**

- Asset Mix/Pie
- Rate of Returns Bar
- Range of Returns Bar
- Monthly RORs Graph
- Rolling RORs Graph
- Portfolio Performance
- Risk vs. Return Matrix
- Standard Deviation Bar
- Range of Values Bar
- Dollar Growth Graph
- Boundary of Returns Graph
- Efficient Frontier Graph

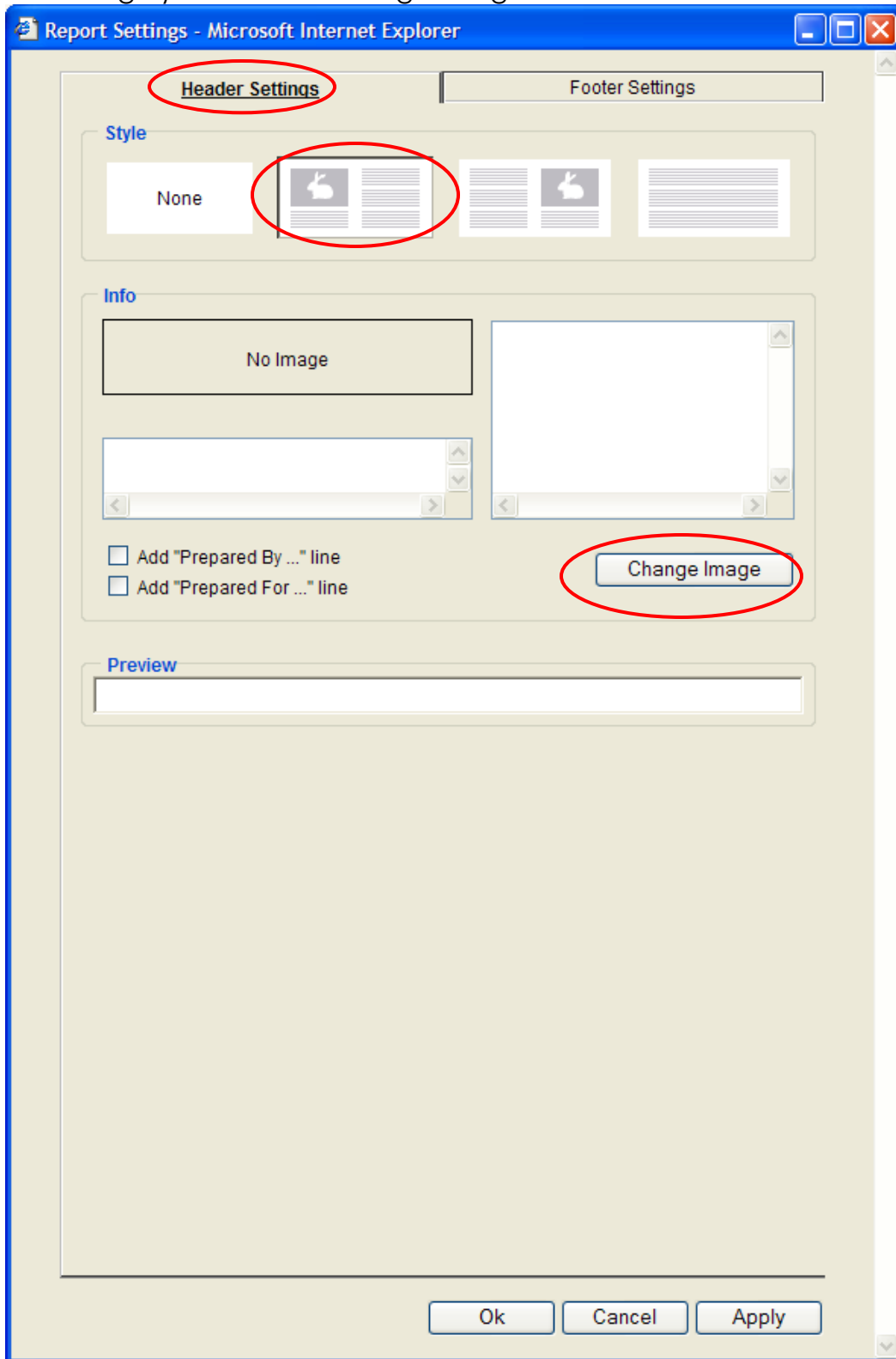
**Plugins Available**

- Efficient Frontier

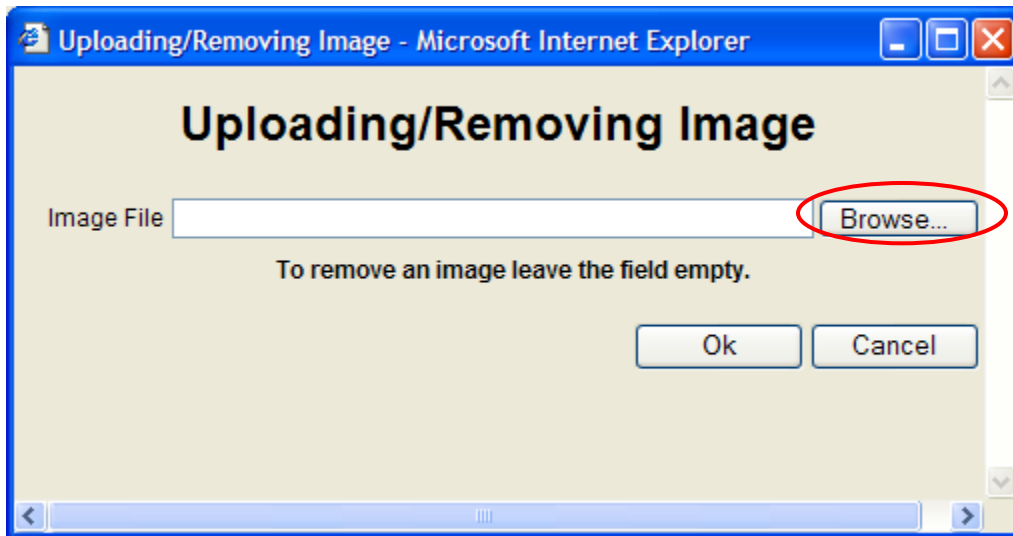
**Report Settings**

Ok   Cancel   Apply

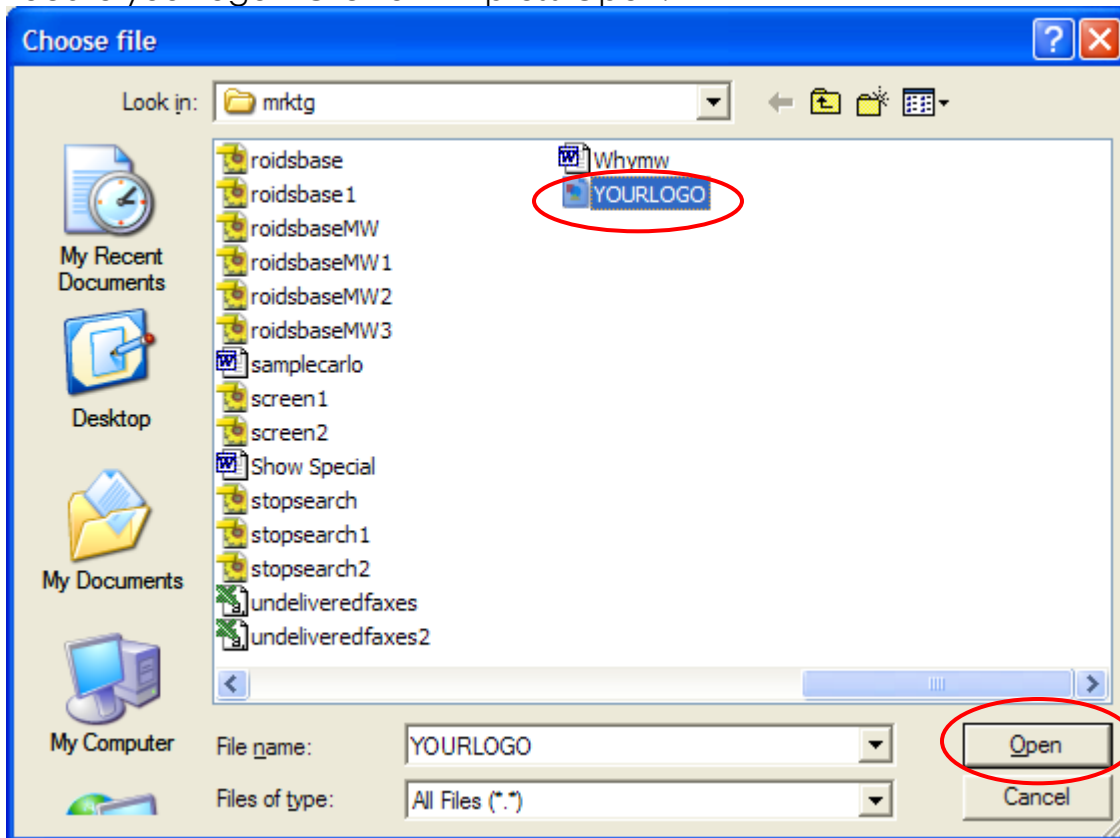
Select where you would like your logo positioned (ie. Header or Footer, Left or Right) → Click on Change Image



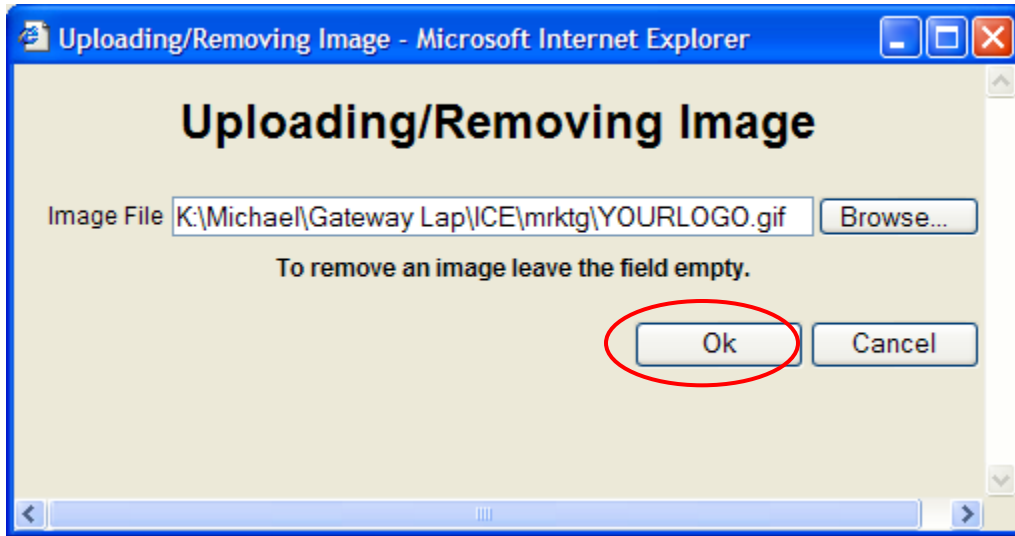
Click on Browse



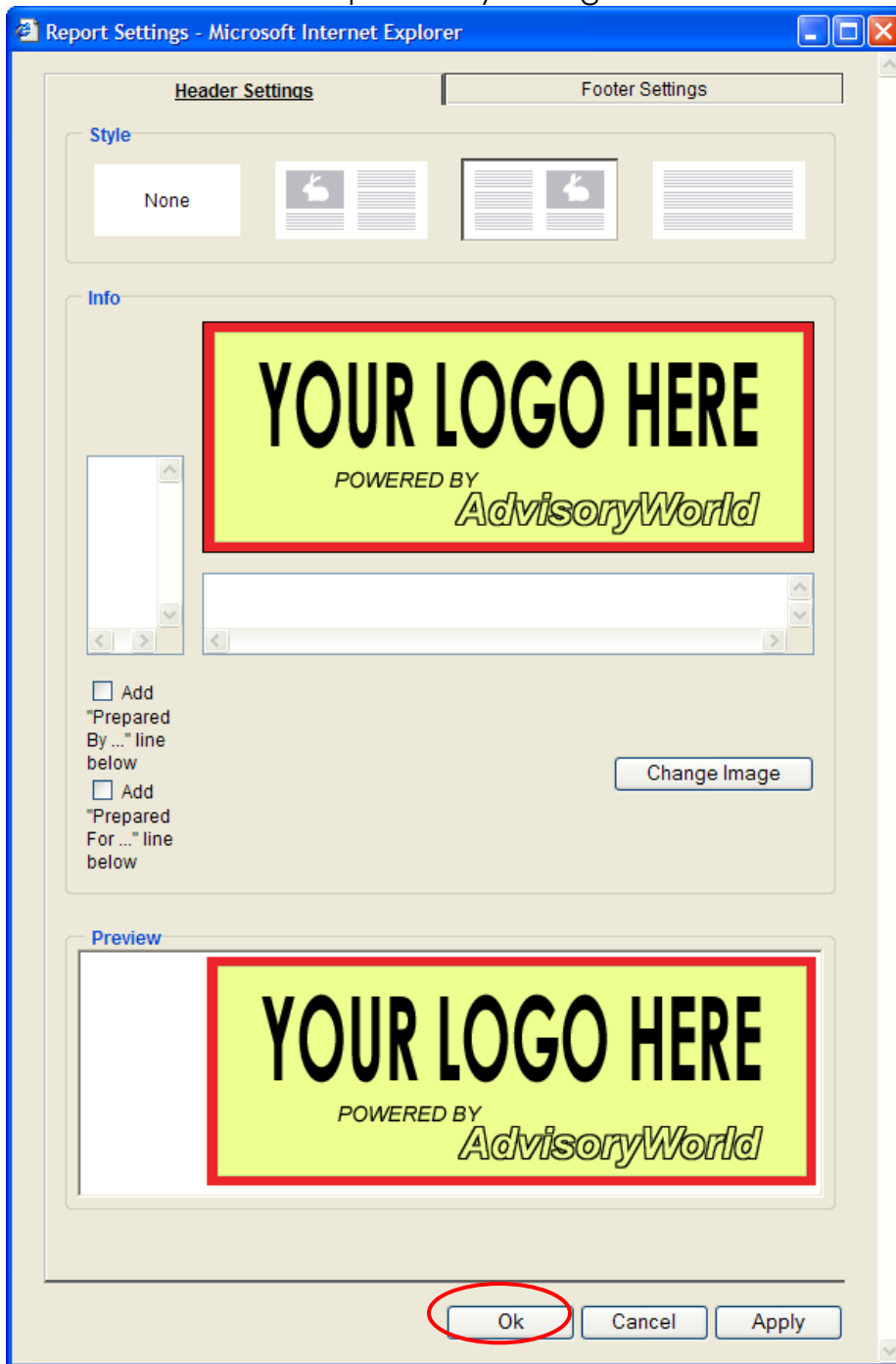
Locate your logo → Click on it → press Open.



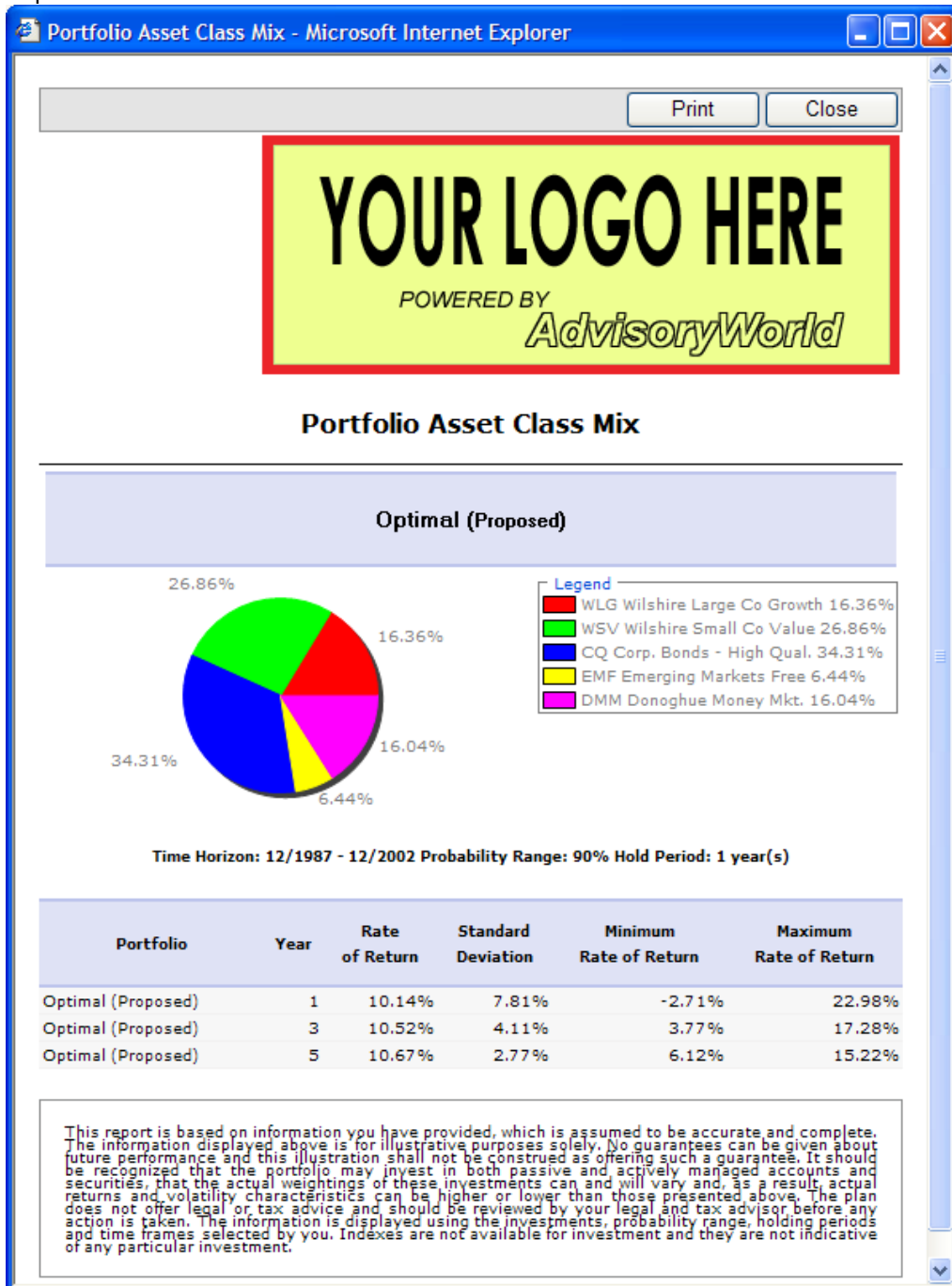
Click OK



You should be able to preview your logo as seen here. Press OK



Your logo will now be viewed, printed, emailed and even shared with reports.



If you have any questions about this or any other feature of ICE please contact AdvisoryWorld.

[tech@advisoryworld.com](mailto:tech@advisoryworld.com) | 818-999-0015